

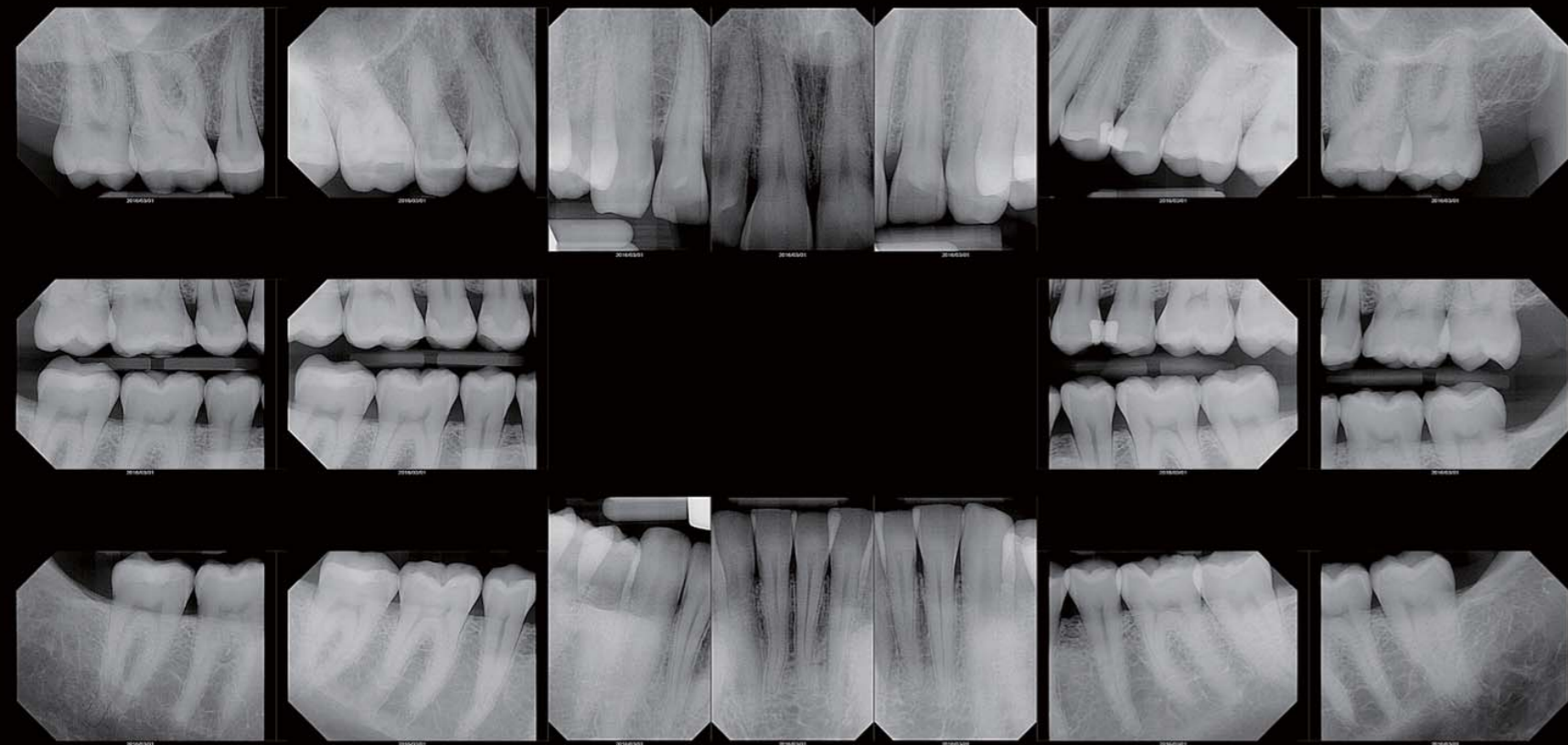


INTRAORAL IMAGING
RIOSensor

Outstanding intraoral sensor

Digitalize your intraoral examination with RIOSensor.
Streamline workflow with high-resolution digital images.

 High-resolution images



Captured by XrayVision 4 - Apteryx Inc

 Ergonomic design

 Plug and Use

 Durability

 Size 1 & 2



Specifications are subject to change without prior notice.

RIS500 Specifications

Outside dimensions

Imaging area

Pixel size

Sensor Technology

Scintillator

Number of pixels

Image resolution

Connection

Cable length

Size 1

39x25mm

30x20mm

20x20µm

Advanced CMOS with Optical fiber

Csl.

1.5 Megapixels

25 lp/mm

USB 2.0 high speed

2 meters

Size 2

42x30mm

34x26mm

20x20µm

Advanced CMOS with Optical fiber

Csl.

2.2 Megapixels

25 lp/mm

USB 2.0 high speed

2 meters



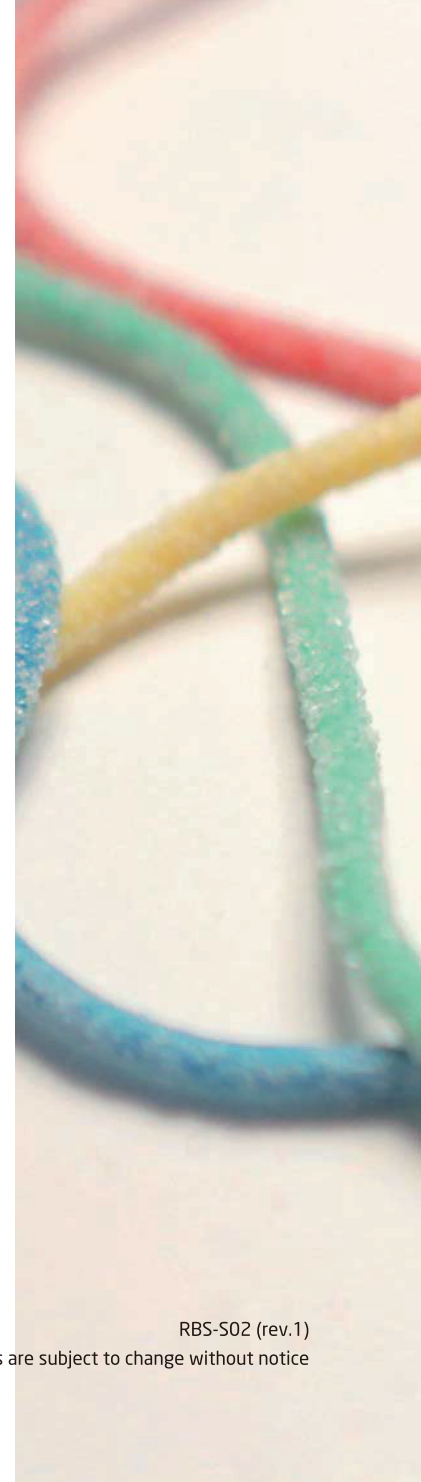
Ray Co., Ltd. 🏢

332-7, Samsung1-ro, Hwaseong-si, Gyeonggi-do, 18380, Korea

Phone +82.31.605.1000

Email ray_overseas@raymedical.co.kr

Web www.raymedical.com



RBS-S02 (rev.1)

Design and specifications are subject to change without notice